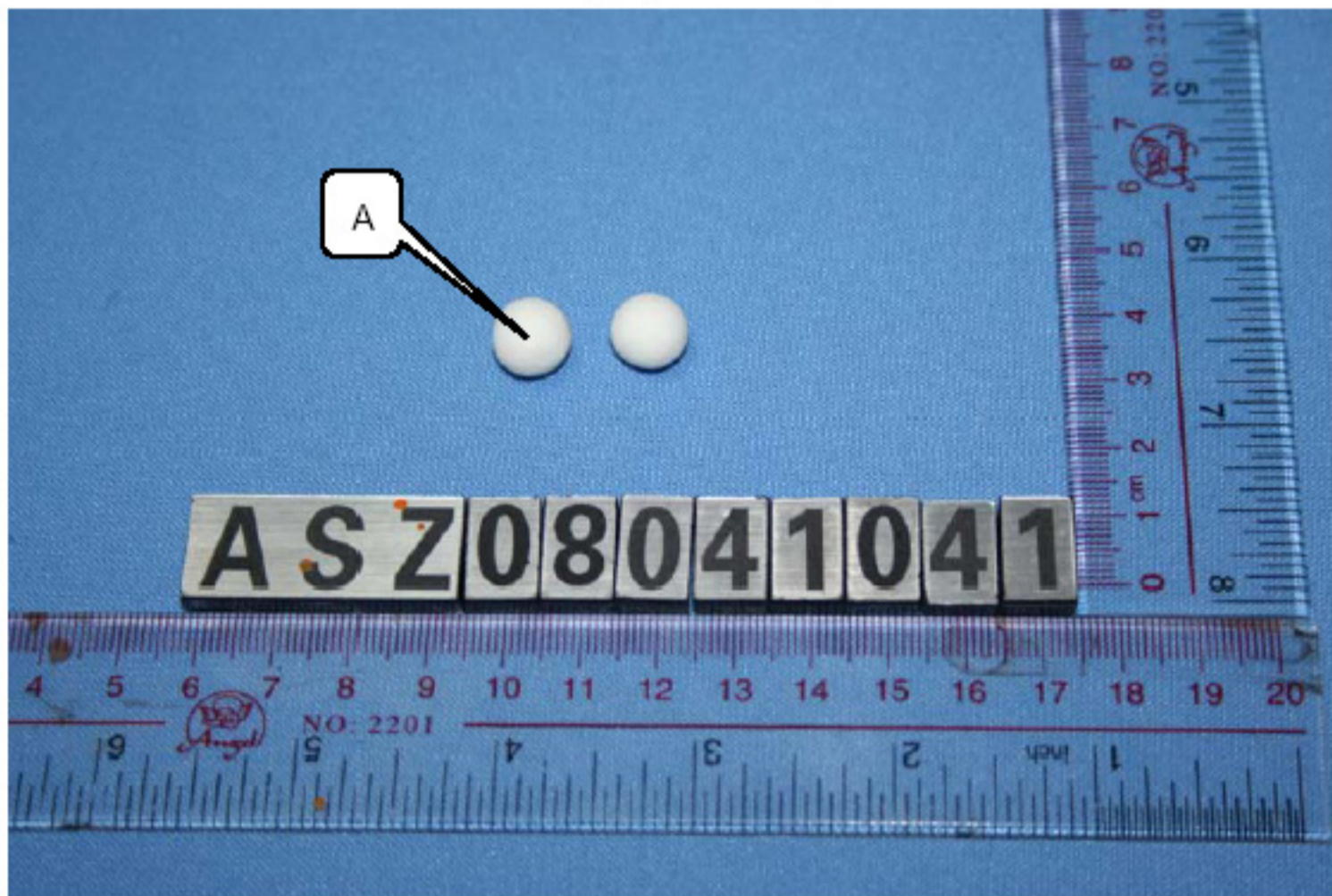


**Note:**

- Specimens, which requested to determine Cadmium, Mercury and Lead Content, have been dissolved completely.
- mg/kg=ppm
- N.D.=not detected(<MQL)
- MQL=Method Quantitation Limit
- (Deca BDE) In polymeric applications is exempted by commission Decision of 13 Oct 2005 amending directive 2002/95/EC notified under document 2005/717/EC
- The results of sample A refer to test report ASZ0804104101A
- Photo is included

**Photograph of Sample**



Energy Ball

\*\*\*End of Report\*\*\*

This Test Report is issued by the Company subject to its Conditions of Issuance of Test Report printed overleaf or attached. The results shown in this Test Report refer only to the sample(s) tested unless otherwise stated and such sample(s) are retained for 30days only. This Test Report shall not be reproduced expected in full, without written approval of the Company.